



IL MUSEO DEI BAMBINI DI ROMA

Sensory accessibility: technical specifications

Tactile maps

The tactile and site maps, which describe the Museum's spaces, have been placed at the following locations:

- at the start of the car park.
- at the manual entrance door to the lobby.
- at the entrance to the pavilion.
- at the information desk inside the pavilion.
- the upper floor of the pavilion, in front of the top of the sloping ramp.

An additional tactile map has been placed near the access ramp to the toilets, inside the pavilion.

The museum maps are also available by scanning a tactile QR code on the location maps found in the museum.

In addition to Braille, the tactile maps feature large print and high contrast color schemes.

Braille aids

Instructions or guidance in Braille and raised lettering are provided on the following exhibits:

- Sea of Creativity
- Tangram
- Talking Tubes
- Meeting of Shapes
- Rai Radio Kids

and on the following play trails:

- Market
- Vegetable Garden
- Peers
- Mission Me
- Let's Save

Tactile booklets are available to the public, including two in English, containing information and resources relating to the *Market* and *Vegetable Garden* play trails, as well as a tactile map of the ground floor of the pavilion.



IL MUSEO DEI BAMBINI DI ROMA

Tactile sensory games are available for the *A Sea of Creativity* exhibition and a *Tic-Tac-Toe* game.

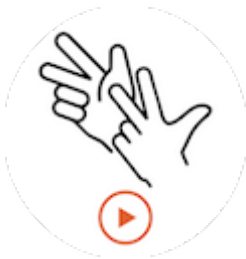
Other Braille materials: along the sloping ramp, a trail on 'Children's Rights' has been created featuring articles from the UN Convention on the Rights of the Child, comprising a total of 36 panels with text also in Braille.

Italian Sign Language

Inside the exhibition pavilion, videos are shown with a welcome message and useful information for your visit in LIS and IS.

Inside the pavilion, there is an information kiosk with exhibits described in LIS.

All Explora exhibits are described in Italian Sign Language (LIS) on the website as well: to watch the video, click on the symbol found on the pages of the relevant [exhibits](#).



Both exhibits – Rai Radio Kids and Quanti Mesi – are equipped with a magnetic induction loop, which enhances sound quality for those using hearing aids or cochlear implants.